

SOFAS & STUFF



ABBOTSBURY SOFA COLLECTION

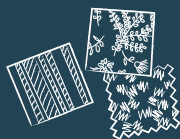
STYLE TIP

Mix different fabrics on more than just the scatter cushions.

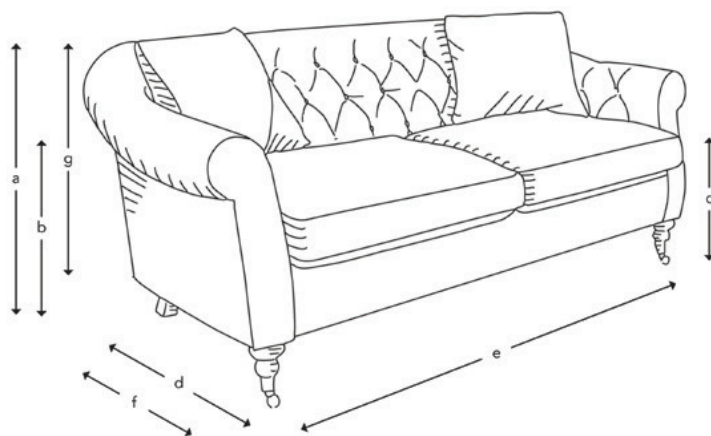
FREE FABRIC SAMPLES

Put simply, we're all about fabrics.

Choose from hundreds of free fabric samples in-store and online.



HOW THE ABBOTSBURY MEASURES UP



Upholstery: Any fabric in the world

Cushions: Feather wrapped foam seat cushions and upholstered buttoned fixed back

Scatter cushions: Luxury duck feather

Frame construction: Hard wood, pinned, glued and screwed

Sizing: Handmade products may have a variation of up to 3cm

Frame guarantee: Lifetime

Front cover: Omega Velvet Teal. Back cover: Linwood Freya Mineral, scatters in Linwood Cosmos

Not sure whether your new furniture will fit? Speak to our experts to arrange an access check

THE PERFECT FIT

Our bespoke furniture is lovingly handmade in Britain using traditional techniques. We're here to help you find the perfect sofa, sofa bed or chair for your home, and each piece can be upholstered in any fabric in the world.

If you need more inspiration, why not book a free design appointment? An expert from your local showroom will find out what you're looking for and answer any questions.



CAN WE HELP?

Our design consultants are on hand to offer style tips and product advice. Contact your local showroom, or call Head Office on 0808 178 3211.

www.sofasandstuff.com

V1.1



4 Seater



3 Seater



2.5 Seater



Snuggler

	4 Seater	3 Seater	2.5 Seater	Snuggler
(a) Total height	92 cm	92 cm	92 cm	92 cm
(b) Arm height	73 cm	73 cm	73 cm	73 cm
(c) Seat height	50 cm	50 cm	50 cm	50 cm
(d) Depth	102 cm	102 cm	102 cm	102 cm
(e) Width	232 cm	202 cm	172 cm	142 cm
(f) Seat depth	57 cm	57 cm	57 cm	57 cm
(g) Access height	78 cm	78 cm	78 cm	78 cm
Number of scatters	2	2	2	2

Standard front feet options:

Additional front feet options:

Standard rear feet options:



Wooden Leg



PA1



PA2



PA3



PA4



PA5



PA18



PA7

All of our feet are available in a variety of stains and finishes. Please ask in-store for more information