



# SOFAS & STUFF

## ALWINTON SOFA COLLECTION

### THE PERFECT FIT

Our bespoke furniture is lovingly handmade in Britain using traditional techniques. We're here to help you find the perfect sofa, sofa bed or chair for your home, and each piece can be upholstered in any fabric in the world.

If you need more inspiration, why not book a free design appointment? An expert from your local showroom will find out what you're looking for and answer any questions.



### CAN WE HELP?

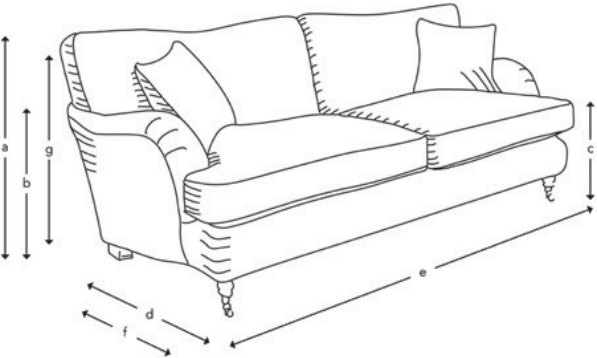
Our design consultants are on hand to offer style tips and product advice. Contact your local showroom, or call Head Office on 0808 178 3211.

[www.sofasandstuff.com](http://www.sofasandstuff.com)

V1.1



### HOW THE ALWINTON MEASURES UP



**Upholstery:** Any fabric in the world  
**Cushions:** 3F (feather fibre wrap) or Quallofil Blue Eco fibre seat cushions with duck feather back cushions  
**Scatter cushions:** Luxury duck feather  
**Frame construction:** Hard wood, pinned, glued and screwed  
**Delivery:** The 4 seater sofa can be ordered split in half for ease of access  
**Sizing:** Handmade products may have a variation of up to 3cm  
**Depth:** Also available at a depth of 93cm  
**Frame guarantee:** Lifetime  
**Front cover:** Floral Linen Lela Mystery. **Back cover:** Linwood Tango Velvet Sapphire

									
	4 Seater	3 Seater	2.5 Seater	2 Seater	Snuggler	Chair	Large Footstool	Small Footstool	Extra Small Footstool
(a) Total height	88 cm	88 cm	88 cm	88 cm	88 cm	88 cm	40 cm	40 cm	40 cm
(b) Arm height	61 cm	61 cm	61 cm	61 cm	61 cm	61 cm	-	-	-
(c) Seat height	53 cm	53 cm	53 cm	53 cm	53 cm	53 cm	-	-	-
(d) Depth	98 cm	98 cm	98 cm	98 cm	98 cm	98 cm	57 cm	54 cm	40 cm
(e) Width	225 cm	204 cm	178 cm	155 cm	132 cm	94 cm	117 cm	84 cm	54 cm
(f) Seat depth	60 cm	60 cm	60 cm	60 cm	60 cm	60 cm	-	-	-
(g) Access height	65 cm	65 cm	65 cm	65 cm	65 cm	65 cm	-	-	-
Number of scatters	2	2	2	2	-	-	-	-	-
Standard front feet options:					Standard rear feet options:				



Not sure whether your new furniture will fit? Speak to our experts to arrange an access check

All of our feet are available in a variety of stains and finishes. Please ask in-store for more information

# SOFAS & STUFF

Also available  
as a sofa and  
sofa bed

## THE PERFECT FIT

Our bespoke furniture is lovingly handmade in Britain using traditional techniques. We're here to help you find the perfect sofa, sofa bed or chair for your home, and each piece can be upholstered in any fabric in the world.

If you need more inspiration, why not book a free design appointment? An expert from your local showroom will find out what you're looking for and answer any questions.



## CAN WE HELP?

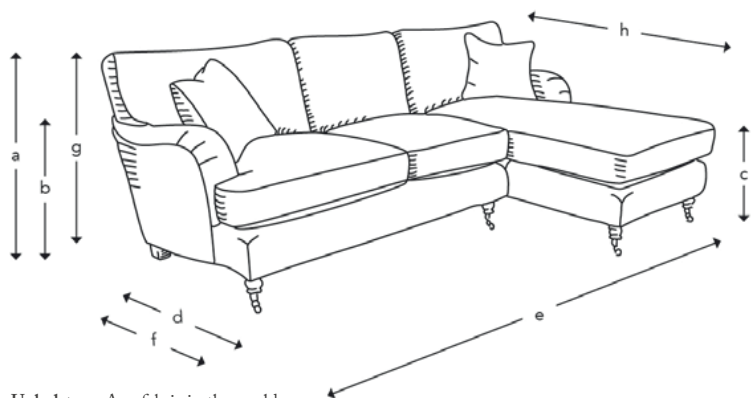
Our design consultants are on hand to offer style tips and product advice. Contact your local showroom, or call Head Office on 0808 178 3211.

[www.sofasandstuff.com](http://www.sofasandstuff.com)

V1.2

## ALWINTON CORNER COLLECTION

### HOW THE ALWINTON CORNERS MEASURE UP



**Upholstery:** Any fabric in the world

**Chaise cushions:** 3F (feather fibre wrap) or Quallofil Blue Eco fibre seat cushions with duck feather back cushions

**Corner unit cushions:** Feather wrap seat cushions with duck feather back cushions

**Scatter cushions:** Luxury duck feather

**Frame construction:** Hard wood, pinned, glued and screwed. Built in sections for easy access

**Sizing:** Handmade products may have a variation of up to 3cm

**Frame guarantee:** Lifetime

**Front cover:** Floral Linen Lela Mystery. **Back cover:** Blendworth Tennyson Conch

Not sure whether your new furniture will fit? Speak to our experts to arrange an access check



	Chair Chaise	Chaise RHF	Chaise LHF	Grande Curved Corner Group	Grande Square Corner Group	Large Corner Group LHF	Large Corner Group RHF	4 Seater 1 Arm	3 Seater 1 Arm	2.5 Seater 1 Arm	2 Seater 1 Arm	Snuggler 1 Arm	Chair 1 Arm	Curved Corner Box	Square Corner Box
(a) Total height	88 cm	88 cm	88 cm	88 cm	88 cm	88 cm	88 cm	88 cm	88 cm	88 cm	88 cm	88 cm	88 cm	88 cm	88 cm
(b) Arm height	61 cm	61 cm	61 cm	61 cm	61 cm	61 cm	61 cm	61 cm	61 cm	61 cm	61 cm	61 cm	61 cm	-	-
(c) Seat height	53 cm	53 cm	53 cm	53 cm	53 cm	53 cm	53 cm	53 cm	53 cm	53 cm	53 cm	53 cm	53 cm	53 cm	53 cm
(d) Depth	157 cm	98 cm	98 cm	98 cm	98 cm	98 cm	98 cm	98 cm	98 cm	98 cm	98 cm	98 cm	98 cm	98 cm	98 cm
(e) Width	94 cm	225 cm	225 cm	272 cm	242 cm	272 cm	211 cm	213 cm	192 cm	166 cm	144 cm	121 cm	83 cm	128 cm	98 cm
(f) Seat depth	-	60 cm	60 cm	60 cm	60 cm	60 cm	60 cm	60 cm	60 cm	60 cm	60 cm	60 cm	60 cm	60 cm	60 cm
(g) Access height	65 cm	65 cm	65 cm	65 cm	65 cm	65 cm	65 cm	65 cm	65 cm	65 cm	65 cm	65 cm	65 cm	65 cm	65 cm
(h) Length	-	157 cm	157 cm	272 cm	242 cm	211 cm	272 cm	-	-	-	-	-	-	-	-
Number of scatters	-	2	2	2	2	2	2	1	1	1	1	1	1	-	-

Oak front feet options:



Oak rear feet option:



PA6

All of our feet are available in a variety of stains and finishes. Please ask in-store for more information



# SOFAS & STUFF

Also available  
as a sofa  
and corner

## ALWINTON SOFA BED COLLECTION

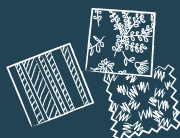
### STYLE TIP

Mix different fabrics  
on more than just  
the scatter cushions.

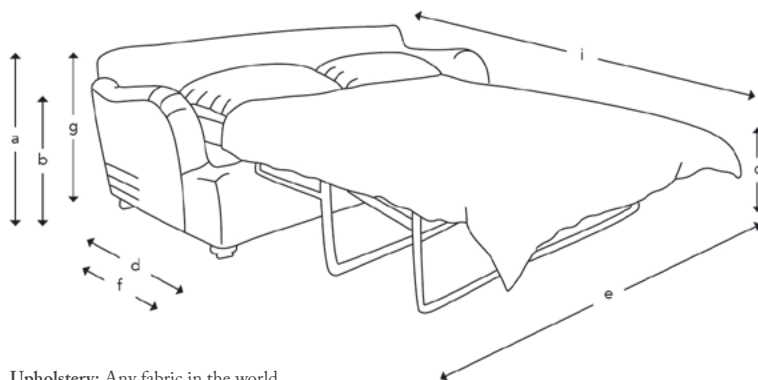
### FREE FABRIC SAMPLES

Put simply, we're  
all about fabrics.

Choose from  
hundreds of free  
fabric samples  
in-store and online.



### HOW THE ALWINTON SOFA BED MEASURES UP



**Upholstery:** Any fabric in the world  
**Cushions:** 3F (feather fibre wrap) or Quallofil Blue Eco fibre seat cushions with duck feather back cushions  
**Scatter cushions:** Luxury duck feather  
**Frame construction:** Hard wood, pinned, glued and screwed  
**Sizing:** Handmade products may have a variation of up to 3cm  
**Frame guarantee:** Lifetime  
**Mattress:** Sofas & Stuff deluxe natural sprung mattress  
**Mechanism:** 2-fold bed action  
*Front and back cover: Clever Matt Velvet Dark Blue*

Not sure whether your new furniture will fit? Speak to our experts to arrange an access check

### THE PERFECT FIT

Our bespoke furniture is lovingly handmade in Britain using traditional techniques. We're here to help you find the perfect sofa, sofa bed or chair for your home, and each piece can be upholstered in any fabric in the world.

If you need more inspiration, why not book a free design appointment? An expert from your local showroom will find out what you're looking for and answer any questions.



### CAN WE HELP?

Our design consultants are on hand to offer style tips and product advice. Contact your local showroom, or call Head Office on 0808 178 3211.

[www.sofasandstuff.com](http://www.sofasandstuff.com)

V1.1



3 Seater Sofa Bed



2 Seater Sofa Bed



Snuggler Sofa Bed

	3 Seater Sofa Bed	2 Seater Sofa Bed	Snuggler Sofa Bed
(a) Total height	92 cm	92 cm	92 cm
(b) Arm height	61 cm	61 cm	61 cm
(c) Seat height	50 cm	50 cm	50 cm
(d) Depth	98 cm	98 cm	98 cm
(e) Width	192 cm	172 cm	132 cm
(f) Seat depth	58 cm	58 cm	58 cm
(g) Access height	70 cm	70 cm	70 cm
(i) Open depth	226 cm	226 cm	226 cm
Scatters	2	2	-
Mattress size	132 cm x 180 cm	112 cm x 180 cm	76 cm x 180 cm
Standard front feet options:	Standard rear feet options:		



All of our feet are available in a variety of stains and finishes. Please ask in-store for more information