

SOFAS & STUFF

THE PERFECT FIT

Our bespoke furniture is lovingly handmade in Britain using traditional techniques. We're here to help you find the perfect sofa, sofa bed or chair for your home, and each piece can be upholstered in any fabric in the world.

If you need more inspiration, why not book a free design appointment? An expert from your local showroom will find out what you're looking for and answer any questions.



CAN WE HELP?

Our design consultants are on hand to offer style tips and product advice. Contact your local showroom, or call Head Office on 0808 178 3211.

www.sofasandstuff.com

V1.1

GIGGLESWICK SOFA COLLECTION

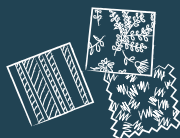
STYLE TIP

Mix different fabrics on more than just the scatter cushions.

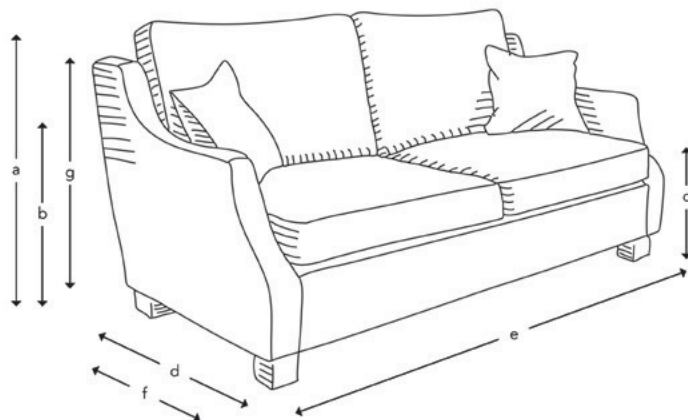
FREE FABRIC SAMPLES

Put simply, we're all about fabrics.

Choose from hundreds of free fabric samples in-store and online.



HOW THE GIGGLESWICK MEASURES UP



Upholstery: Any fabric in the world

Cushions: Quallofil Blue Eco fibre seat and back cushions

Scatter cushions: Luxury duck feather

Frame construction: Hard wood, pinned, glued and screwed

Sizing: Handmade products may have a variation of up to 3cm

Frame guarantee: Lifetime

Front cover: Linwood Lundy Denim. Back cover: Sanderson Bobo Velvet Marine

Not sure whether your new furniture will fit? Speak to our experts to arrange an access check



4 Seater



3 Seater



2 Seater



Chair

	4 Seater	3 Seater	2 Seater	Chair
(a) Total height	98 cm	98 cm	98 cm	98 cm
(b) Arm height	65 cm	65 cm	65 cm	65 cm
(c) Seat height	52 cm	52 cm	52 cm	52 cm
(d) Depth	103 cm	103 cm	103 cm	103 cm
(e) Width	227 cm	197 cm	157 cm	87 cm
(f) Seat depth	56 cm	56 cm	56 cm	56 cm
(g) Access height	77 cm	77 cm	77 cm	77 cm
Number of scatters	2	2	2	-

Standard feet option:



Wooden Leg

All of our feet are available in a variety of stains and finishes. Please ask in-store for more information