

# SOFAS & STUFF

## GRASSINGTON SOFA COLLECTION

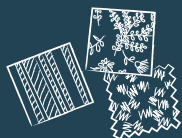
### STYLE TIP

Mix different fabrics on more than just the scatter cushions.

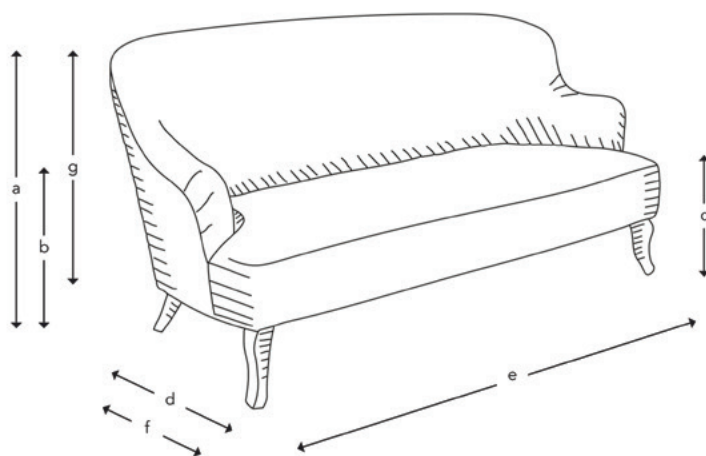
### FREE FABRIC SAMPLES

Put simply, we're all about fabrics.

Choose from hundreds of free fabric samples in-store and online.



### HOW THE GRASSINGTON MEASURES UP



**Upholstery:** Any fabric in the world

**Cushions:** Upholstered sprung seat and fixed back

**Frame construction:** Hard wood, pinned, glued and screwed

**Sizing:** Handmade products may have a variation of up to 3cm

**Frame guarantee:** Lifetime

*Front cover: Linwood Kitty Spring Green. Back cover: Floral Linen Lily Pad Vermillion*

Not sure whether your new furniture will fit? Speak to our experts to arrange an access check

### THE PERFECT FIT

Our bespoke furniture is lovingly handmade in Britain using traditional techniques. We're here to help you find the perfect sofa, sofa bed or chair for your home, and each piece can be upholstered in any fabric in the world.

If you need more inspiration, why not book a free design appointment? An expert from your local showroom will find out what you're looking for and answer any questions.



### CAN WE HELP?

Our design consultants are on hand to offer style tips and product advice. Contact your local showroom, or call Head Office on 0808 178 3211.

[www.sofasandstuff.com](http://www.sofasandstuff.com)

V1.1



3 Seater



2.5 Seater



2 Seater



Chair

	3 Seater	2.5 Seater	2 Seater	Chair
(a) Total height	85 cm	85 cm	85 cm	85 cm
(b) Arm height	58 cm	58 cm	58 cm	58 cm
(c) Seat height	45 cm	45 cm	45 cm	45 cm
(d) Depth	85 cm	85 cm	85 cm	85 cm
(e) Width	180 cm	160 cm	140 cm	84 cm
(f) Seat depth	60 cm	60 cm	60 cm	60 cm
(g) Access height	69 cm	69 cm	69 cm	69 cm
Number of scatters	-	-	-	-

#### Standard front feet option:



SD29

#### Standard rear feet option:



SD30

All of our feet are available in a variety of stains and finishes. Please ask in-store for more information