

# SOFAS & STUFF

## THE PERFECT FIT

Our bespoke furniture is lovingly handmade in Britain using traditional techniques. We're here to help you find the perfect sofa, sofa bed or chair for your home, and each piece can be upholstered in any fabric in the world.

If you need more inspiration, why not book a free design appointment? An expert from your local showroom will find out what you're looking for and answer any questions.



## CAN WE HELP?

Our design consultants are on hand to offer style tips and product advice. Contact your local showroom, or call Head Office on 0808 178 3211.

[www.sofasandstuff.com](http://www.sofasandstuff.com)

V1.0

## LEWES SOFA COLLECTION

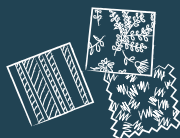
### STYLE TIP

Mix different fabrics on more than just the scatter cushions.

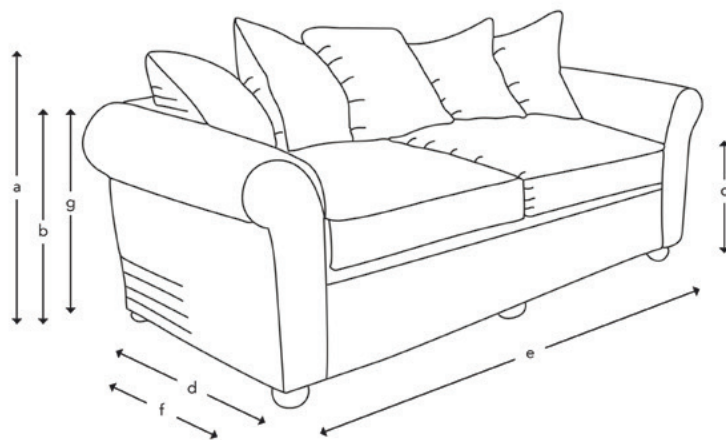
### FREE FABRIC SAMPLES

Put simply, we're all about fabrics.

Choose from hundreds of free fabric samples in-store and online.



### HOW THE LEWES MEASURES UP



**Upholstery:** Any fabric in the world

**Cushions:** Quallofil Blue Eco fibre seat cushions and luxury duck feather filled back scatters

**Frame construction:** Hard wood, pinned, glued and screwed

**Sizing:** Handmade products may have a variation of up to 3cm

**Frame guarantee:** Lifetime

A split version can be made for ease of access

*Front and back cover: Walloon Stripe Red, scatters in Walloon and Linwood Luna*

Not sure whether your new furniture will fit? Speak to our experts to arrange an access check



4 Seater  
(5 scatters)



3 Seater  
(5 scatters)



Chair  
(1 scatter)

	4 Seater (5 scatters)	3 Seater (5 scatters)	Chair (1 scatter)
(a) Total height	89 cm	89 cm	89 cm
(b) Arm height	72 cm	72 cm	72 cm
(c) Seat height	51 cm	51 cm	51 cm
(d) Depth	118 cm	118 cm	118 cm
(e) Width	227 cm	198 cm	124 cm
(f) Seat depth	57 cm	57 cm	57 cm
(g) Access height	72 cm	72 cm	72 cm

### Standard feet option:



All of our feet are available in a variety of stains and finishes. Please ask in-store for more information