

# SOFAS & STUFF

## LEYBURN SOFA COLLECTION

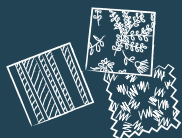
### STYLE TIP

Mix different fabrics on more than just the scatter cushions.

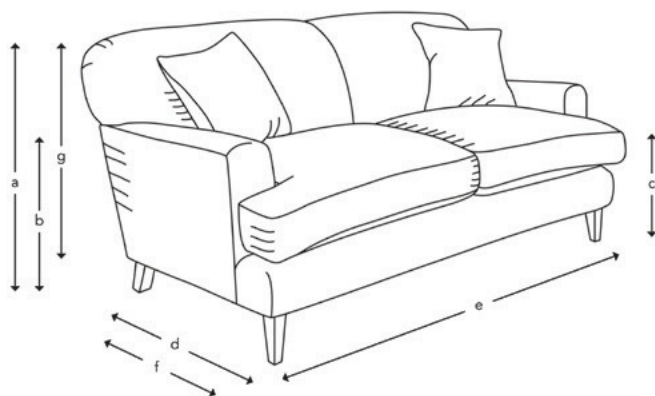
### FREE FABRIC SAMPLES

Put simply, we're all about fabrics.

Choose from hundreds of free fabric samples in-store and online.



### HOW THE LEYBURN MEASURES UP



**Upholstery:** Any fabric in the world

**Cushions:** Upholstered fixed back with 3F (feather fibre wrap) or Quallofil Blue Eco fibre seat cushions

**Scatter cushions:** Luxury duck feather

**Frame construction:** Hard wood, doweled, glued and screwed

**Sizing:** Handmade products may have a variation of up to 3cm

**Frame guarantee:** Lifetime

**Depth:** Also available at an overall depth of 105cm

*Front and back cover: Romo Linara Bilberry*

Not sure whether your new furniture will fit? Speak to our experts to arrange an access check

### THE PERFECT FIT

Our bespoke furniture is lovingly handmade in Britain using traditional techniques. We're here to help you find the perfect sofa, sofa bed or chair for your home, and each piece can be upholstered in any fabric in the world.

If you need more inspiration, why not book a free design appointment? An expert from your local showroom will find out what you're looking for and answer any questions.



### CAN WE HELP?

Our design consultants are on hand to offer style tips and product advice. Contact your local showroom, or call Head Office on 0808 178 3211.

[www.sofasandstuff.com](http://www.sofasandstuff.com)

V1.0

|                    |  |  |  |  |  |  |
|--------------------|---|---|---|---|---|---|
|                    | 4 Seater  | 3 Seater  | 2.5 Seater  | 2 Seater  | Snuggler  | Chair   |
| (a) Total height   | 96 cm   | 96 cm   | 96 cm   | 96 cm   | 96 cm   | 96 cm   |
| (b) Arm height     | 65 cm   | 65 cm   | 65 cm   | 65 cm   | 65 cm   | 65 cm   |
| (c) Seat height    | 57 cm   | 57 cm   | 57 cm   | 57 cm   | 57 cm   | 57 cm   |
| (d) Depth          | 100 cm  | 100 cm  | 100 cm  | 100 cm  | 100 cm  | 100 cm  |
| (e) Width          | 225 cm  | 210 cm  | 187 cm  | 160 cm  | 130 cm  | 85 cm   |
| (f) Seat depth     | 63 cm   | 63 cm   | 63 cm   | 63 cm   | 63 cm   | 63 cm   |
| (g) Access height  | 82 cm   | 82 cm   | 82 cm   | 82 cm   | 82 cm   | 82 cm   |
| Number of scatters | 2   | 2   | 2   | 2   | 1   | -   |

Standard front feet options:

Standard back feet:



PA1



PA2



PA3



PA4



PA5



PA18



SD3

All of our feet are available in a variety of stains and finishes. Please ask in-store for more information