



THE PERFECT FIT

Our bespoke furniture is lovingly handmade in Britain using traditional techniques. We're here to help you find the perfect sofa, sofa bed or chair for your home, and each piece can be upholstered in any fabric in the world.

If you need more inspiration, why not book a free design appointment? An expert from your local showroom will find out what you're looking for and answer any questions.



LINTON SOFA COLLECTION

CAN WE HELP?

Our design consultants are on hand to offer style tips and product advice. Contact your local showroom, or call Head Office on 0808 178 3211.

www.sofasandstuff.com

V1.0

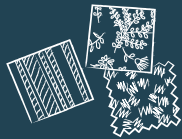
STYLE TIP

Mix different fabrics on more than just the scatter cushions.

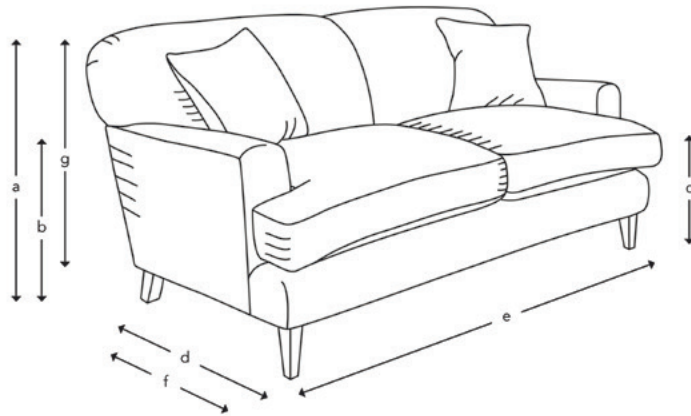
FREE FABRIC SAMPLES

Put simply, we're all about fabrics.

Choose from hundreds of free fabric samples in-store and online.



HOW THE LINTON MEASURES UP



- Upholstery: Any fabric in the world
- Cushions: Upholstered fixed back with 3F (feather fibre wrap) or Quallofil Blue Eco fibre seat cushions
- Scatter cushions: Luxury duck feather
- Frame construction: Hard wood, doweled, glued and screwed
- Sizing: Handmade products may have a variation of up to 3cm
- Frame guarantee: Lifetime
- Depth: Also available at an overall depth of 100cm

Not sure whether your new furniture will fit? Speak to our experts to arrange an access check



	4 Seater	3 Seater	2.5 Seater	2 Seater	Snuggler	Large Footstool	Small Footstool
(a) Total height	96 cm	96 cm	96 cm	96 cm	96 cm	35 cm	35 cm
(b) Arm height	65 cm	65 cm	65 cm	65 cm	65 cm	-	-
(c) Seat height	57 cm	57 cm	57 cm	57 cm	57 cm	35 cm	35 cm
(d) Depth	105 cm	105 cm	105 cm	105 cm	105 cm	105 cm	75 cm
(e) Width	225 cm	210 cm	187 cm	160 cm	130 cm	125 cm	122 cm
(f) Seat depth	75 cm	75 cm	75 cm	75 cm	75 cm	-	-
(g) Access height	82 cm	82 cm	82 cm	82 cm	82 cm	35 cm	35 cm
Number of scatters	2	2	2	2	1	-	-

Standard front feet options:



Standard rear feet options:



All of our feet are available in a variety of stains and finishes. Please ask in-store for more information