

# SOFAS & STUFF

## MARYLEBONE SOFA COLLECTION

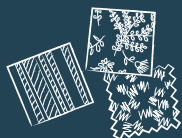
### STYLE TIP

Mix different fabrics on more than just the scatter cushions.

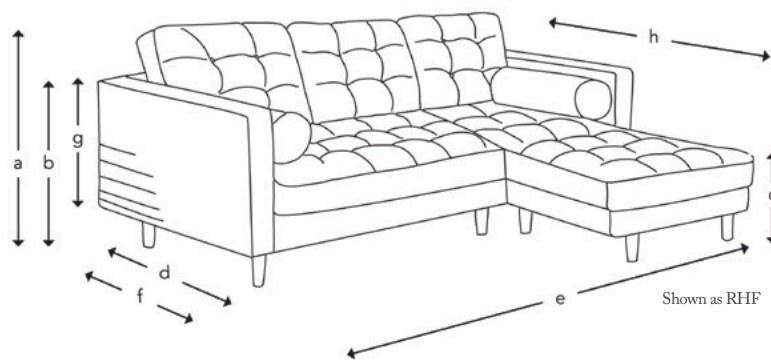
### FREE FABRIC SAMPLES

Put simply, we're all about fabrics.

Choose from hundreds of free fabric samples in-store and online.



### HOW THE MARYLEBONE MEASURES UP



**Upholstery:** Any fabric in the world

**Cushions:** Foam seat cushions and fibre filled back cushions

**Bolster cushions:** Fibre filled

**Frame construction:** Hard wood, pinned, glued and screwed

**Sizing:** Handmade products may have a variation of up to 3cm

**Frame guarantee:** Lifetime

*Front cover: Concrete Velvet. Back cover: House Velvet Indigo*

Not sure whether your new furniture will fit? Speak to our experts to arrange an access check

### THE PERFECT FIT

Our bespoke furniture is lovingly handmade in Britain using traditional techniques. We're here to help you find the perfect sofa, sofa bed or chair for your home, and each piece can be upholstered in any fabric in the world.

If you need more inspiration, why not book a free design appointment? An expert from your local showroom will find out what you're looking for and answer any questions.



### CAN WE HELP?

Our design consultants are on hand to offer style tips and product advice. Contact your local showroom, or call Head Office on 0808 178 3211.

[www.sofasandstuff.com](http://www.sofasandstuff.com)

V1.1



3 Seater



2.5 Seater



Chaise Unit  
LHF or RHF



Chair

	3 Seater	2.5 Seater	Chaise Unit LHF or RHF	Chair
(a) Total height	82 cm	82 cm	82 cm	82 cm
(b) Arm height	65 cm	65 cm	65 cm	65 cm
(c) Seat height	43 cm	43 cm	43 cm	43 cm
(d) Depth	98 cm	98 cm	98 cm	98 cm
(e) Width	225 cm	185 cm	240 cm	100 cm
(f) Seat depth	63 cm	63 cm	63 cm	63 cm
(g) Access height	55 cm	55 cm	55 cm	55 cm
(h) Length	-	-	158 cm	-
Number of bolsters	2	2	2	2

Standard feet option:



All of our feet are available in a variety of stains and finishes. Please ask in-store for more information