



SOFAS & STUFF

OTLEY SOFA COLLECTION

THE PERFECT FIT

Our bespoke furniture is lovingly handmade in Britain using traditional techniques. We're here to help you find the perfect sofa, sofa bed or chair for your home, and each piece can be upholstered in any fabric in the world.

If you need more inspiration, why not book a free design appointment? An expert from your local showroom will find out what you're looking for and answer any questions.



CAN WE HELP?

Our design consultants are on hand to offer style tips and product advice. Contact your local showroom, or call Head Office on 0808 178 3211.

www.sofasandstuff.com

V1.0



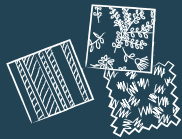
STYLE TIP

Mix different fabrics on more than just the scatter cushions.

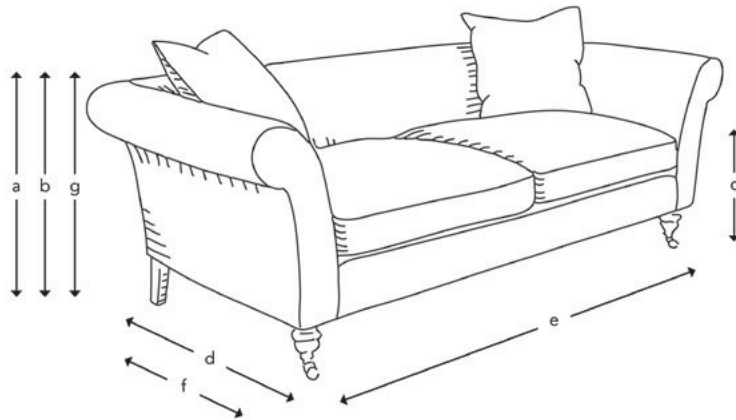
FREE FABRIC SAMPLES

Put simply, we're all about fabrics.

Choose from hundreds of free fabric samples in-store and online.



HOW THE OTLEY MEASURES UP



Upholstery: Any fabric in the world

Cushions: Feather wrapped foam seat cushions and fixed back. Other options on request

Scatter cushions: Luxury duck feather

Frame construction: Hard wood, doweled, glued and screwed

Sizing: Handmade products may have a variation of up to 3cm

Frame guarantee: Lifetime

Front and back cover: Rustic Ticking Stripe Ivory

Not sure whether your new furniture will fit? Speak to our experts to arrange an access check



4 Seater



3 Seater



2.5 Seater



2 Seater



Chair

(a) Total height	74 cm	74 cm	74 cm	74 cm	74 cm
(b) Arm height	74 cm	74 cm	74 cm	74 cm	74 cm
(c) Seat height	53 cm	53 cm	53 cm	53 cm	53 cm
(d) Depth	96 cm	96 cm	96 cm	96 cm	96 cm
(e) Width	240 cm	210 cm	180 cm	150 cm	99 cm
(f) Seat depth	66 cm	66 cm	66 cm	66 cm	66 cm
(g) Access height	60 cm	60 cm	60 cm	60 cm	60 cm
Number of scatters	2	2	2	2	-

Standard front feet options:



SD11



SD12



SD13

Standard rear feet options:



SD17

All of our feet are available in a variety of stains and finishes. Please ask in-store for more information