



## SOFAS & STUFF

### SAXMUNDHAM SOFA COLLECTION

#### THE PERFECT FIT

Our bespoke furniture is lovingly handmade in Britain using traditional techniques. We're here to help you find the perfect sofa, sofa bed or chair for your home, and each piece can be upholstered in any fabric in the world.

If you need more inspiration, why not book a free design appointment? An expert from your local showroom will find out what you're looking for and answer any questions.



#### CAN WE HELP?

Our design consultants are on hand to offer style tips and product advice. Contact your local showroom, or call Head Office on 0808 178 3211.

[www.sofasandstuff.com](http://www.sofasandstuff.com)

V1.0



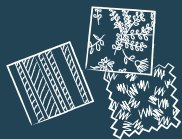
#### STYLE TIP

Mix different fabrics on more than just the scatter cushions.

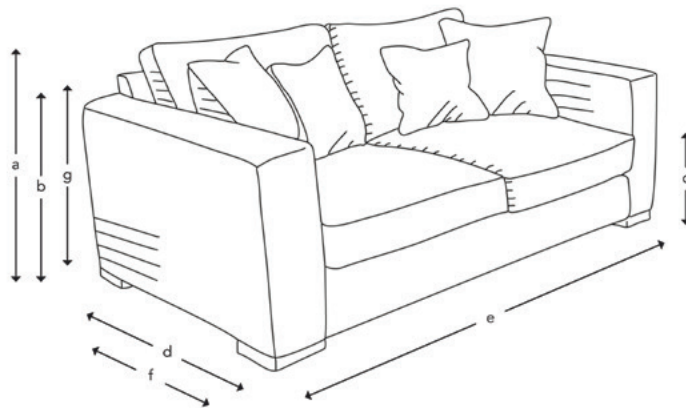
#### FREE FABRIC SAMPLES

Put simply, we're all about fabrics.

Choose from hundreds of free fabric samples in-store and online.

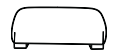


#### HOW THE SAXMUNDHAM MEASURES UP



**Upholstery:** Any fabric in the world  
**Cushions:** 3F (feather fibre wrap) or Quallofil Blue Eco fibre seat cushions and duck feather back cushions  
**Scatter cushions:** Luxury duck feather  
**Frame construction:** Hard wood, pinned, glued and screwed  
**Bolt-on arms** as standard. Bolt-on back available on request (this is an extra)  
**Sizing:** Handmade products may have a variation of up to 3cm  
**Frame guarantee:** Lifetime  
**Front and back cover:** Warwick Boucle Andes

Not sure whether your new furniture will fit? Speak to our experts to arrange an access check



4 Seater

3 Seater

Snuggler

Chair

Banquette Stool

(a) Total height	89 cm	89 cm	89 cm	89 cm	27 cm
(b) Arm height	66 cm	66 cm	66 cm	66 cm	-
(c) Seat height	50 cm	50 cm	50 cm	50 cm	-
(d) Depth	107 cm	107 cm	107 cm	97 cm	62 cm
(e) Width	236 cm	196 cm	141 cm	98 cm	99 cm
(f) Seat depth	65 cm	65 cm	65 cm	55 cm	-
(g) Access height	71 cm	71 cm	71 cm	71 cm	-
Number of scatters	4 (2 large, 2 small)	4 (2 large, 2 small)	2 (small)	-	-

Standard front and rear feet in black, walnut, dark brown, mid-brown and natural:



All of our feet are available in a variety of stains and finishes. Please ask in-store for more information