

SOFAS & STUFF

Also available
as a sofa bed

THE PERFECT FIT

Our bespoke furniture is lovingly handmade in Britain using traditional techniques. We're here to help you find the perfect sofa, sofa bed or chair for your home, and each piece can be upholstered in any fabric in the world.

If you need more inspiration, why not book a free design appointment? An expert from your local showroom will find out what you're looking for and answer any questions.



CAN WE HELP?

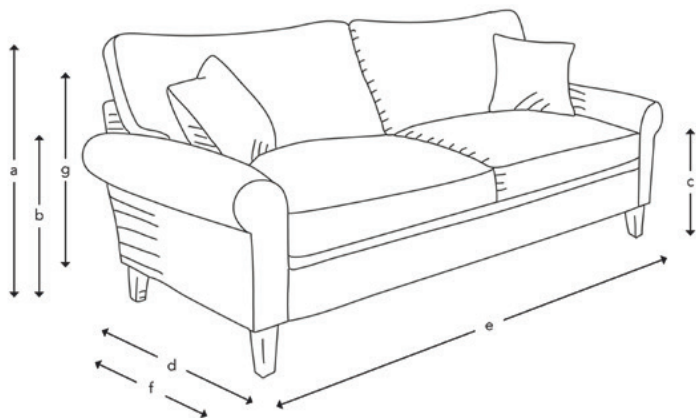
Our design consultants are on hand to offer style tips and product advice. Contact your local showroom, or call Head Office on 0808 178 3211.

www.sofasandstuff.com

V1.1

WAVERLEY SOFA COLLECTION

HOW THE WAVERLEY MEASURES UP



Upholstery: Any fabric in the world

Cushions: Quallofil Blue Eco fibre seat cushions with duck feather back cushions

Scatter cushions: Luxury duck feather

Frame construction: Hard wood, pinned, glued and screwed

Sizing: Handmade products may have a variation of up to 3cm

Frame guarantee: Lifetime

Front cover: Cloth 18 Bengal Indigo. **Back cover:** House Velvet Terracotta

Not sure whether your new furniture will fit? Speak to our experts to arrange an access check



4 Seater



3 Seater



2 Seater



Snuggler



Chair



Large Footstool



Small Footstool

	4 Seater	3 Seater	2 Seater	Snuggler	Chair	Large Footstool	Small Footstool
(a) Total height	93 cm	93 cm	93 cm	93 cm	93 cm	40 cm	40 cm
(b) Arm height	64 cm	64 cm	64 cm	64 cm	64 cm	-	-
(c) Seat height	53 cm	53 cm	53 cm	53 cm	53 cm	-	-
(d) Depth	100 cm	100 cm	100 cm	100 cm	95 cm	54 cm	54 cm
(e) Width	223 cm	198 cm	168 cm	130 cm	95 cm	117 cm	84 cm
(f) Seat depth	60 cm	60 cm	60 cm	60 cm	51 cm	-	-
(g) Access height	60 cm	60 cm	60 cm	60 cm	60 cm	-	-
Number of scatters	2	2	2	-	-	-	-

Standard front and rear feet options:



PA1



PA2



PA3



PA4



PA5



PA18



PA5

Additional oak rear feet options:

All of our feet are available in a variety of stains and finishes. Please ask in-store for more information

SOFAS & STUFF

Also available
as a sofa

THE PERFECT FIT

Our bespoke furniture is lovingly handmade in Britain using traditional techniques. We're here to help you find the perfect sofa, sofa bed or chair for your home, and each piece can be upholstered in any fabric in the world.

If you need more inspiration, why not book a free design appointment? An expert from your local showroom will find out what you're looking for and answer any questions.



CAN WE HELP?

Our design consultants are on hand to offer style tips and product advice. Contact your local showroom, or call Head Office on 0808 178 3211.

www.sofasandstuff.com

V1.1

WAVERLEY SOFA BED COLLECTION

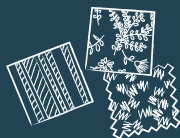
STYLE TIP

Mix different fabrics on more than just the scatter cushions.

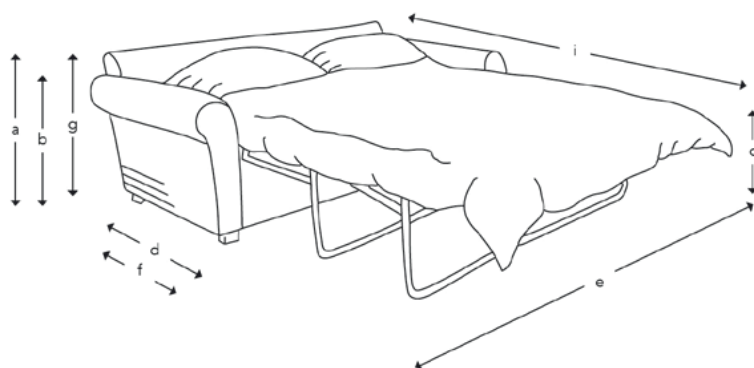
FREE FABRIC SAMPLES

Put simply, we're all about fabrics.

Choose from hundreds of free fabric samples in-store and online.



HOW THE WAVERLEY SOFA BED MEASURES UP



Upholstery: Any fabric in the world

Cushions: Quallofil Blue Eco fibre seat cushions with luxury duck feather back cushions

Scatter cushions: Luxury duck feather

Frame construction: Hard wood, pinned, glued and screwed

Sizing: Handmade products may have a variation of up to 3cm

Frame guarantee: Lifetime

Mattress: Sofas & Stuff deluxe natural sprung mattress

Mechanism: 2-fold bed action

Front cover: Cloth 18 Bengal Indigo. Back cover: House Velvet Terracotta

Not sure whether your new furniture will fit? Speak to our experts to arrange an access check



3 Seater Sofa Bed



2 Seater Sofa Bed



Snuggler Sofa Bed

	3 Seater Sofa Bed	2 Seater Sofa Bed	Snuggler Sofa Bed
(a) Total height	90 cm	90 cm	90 cm
(b) Arm height	62 cm	62 cm	62 cm
(c) Seat height	53 cm	53 cm	53 cm
(d) Depth	98 cm	98 cm	98 cm
(e) Width	187 cm	167 cm	127 cm
(f) Seat depth	58 cm	58 cm	58 cm
(g) Access height	70 cm	70 cm	70 cm
(i) Open depth	226 cm	226 cm	226 cm
Number of scatters	2	2	-
Mattress size	132 cm x 182 cm	112 cm x 182 cm	76 cm x 182 cm

Standard feet options in dark or natural:



SD26