



SOFAS & STUFF

WOODBIDGE SOFA COLLECTION

THE PERFECT FIT

Our bespoke furniture is lovingly handmade in Britain using traditional techniques. We're here to help you find the perfect sofa, sofa bed or chair for your home, and each piece can be upholstered in any fabric in the world.

If you need more inspiration, why not book a free design appointment? An expert from your local showroom will find out what you're looking for and answer any questions.



CAN WE HELP?

Our design consultants are on hand to offer style tips and product advice. Contact your local showroom, or call Head Office on 0808 178 3211.

www.sofasandstuff.com

V1.0



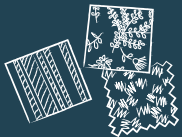
STYLE TIP

Mix different fabrics on more than just the scatter cushions.

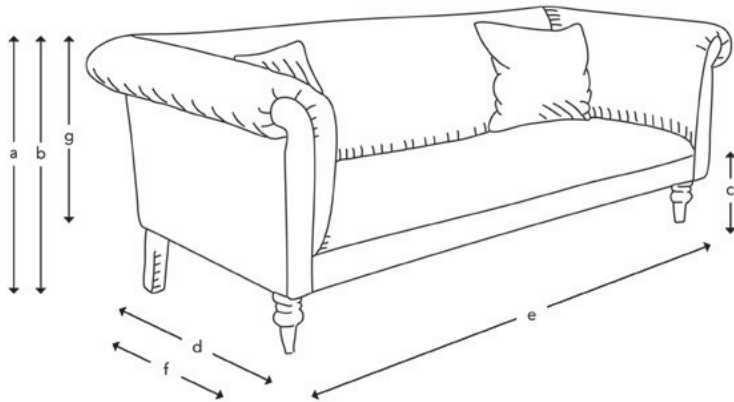
FREE FABRIC SAMPLES

Put simply, we're all about fabrics.

Choose from hundreds of free fabric samples in-store and online.



HOW THE WOODBRIDGE MEASURES UP



Upholstery: Any fabric in the world

Cushions: Upholstered sprung seat and fixed back

Scatter cushions: Luxury duck feather

Frame construction: Hard wood, doweled, glued and screwed

Sizing: Handmade products may have a variation of up to 3cm

Frame guarantee: Lifetime

Not sure whether your new furniture will fit? Speak to our experts to arrange an access check



3 Seater



2.5 Seater

	3 Seater	2.5 Seater
(a) Total height	72 cm	72 cm
(b) Arm height	72 cm	72 cm
(c) Seat height	44 cm	44 cm
(d) Depth	95 cm	95 cm
(e) Width	210 cm	180 cm
(f) Seat depth	63 cm	63 cm
(g) Access height	55 cm	55 cm
Number of scatters	2	2

Standard front feet options available in a variety of stains and finishes:

Standard rear feet options:



PA1



PA2



PA3



PA4



PA5



PA18



PA7

All of our feet are available in a variety of stains and finishes. Please ask in-store for more information