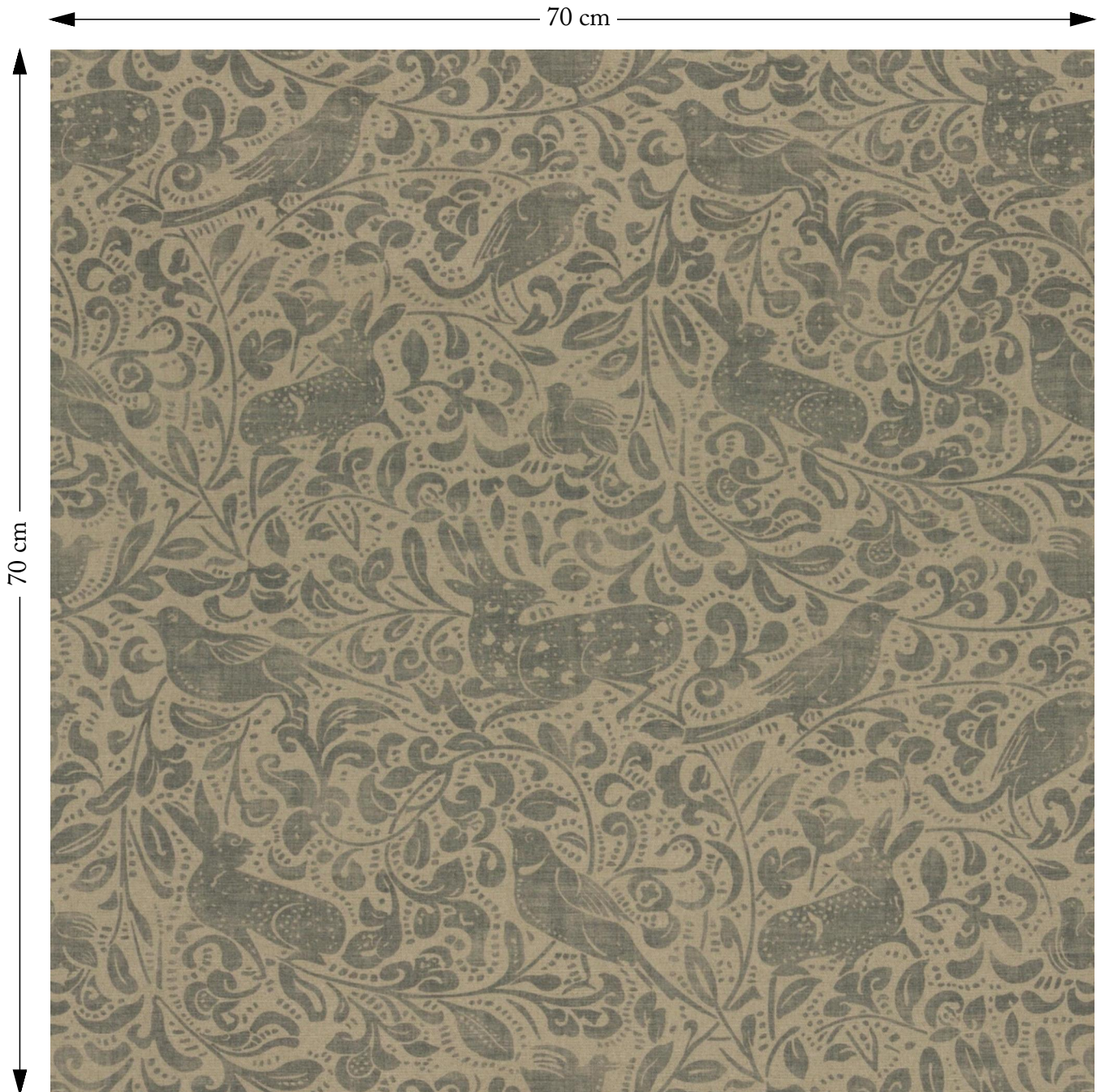


# SOFAS & STUFF



The amount of fabric shown above is indicated by the dimension.

## V&A Drawn from Nature Bird and Rabbit Duck Egg

Composition: 100% Linen

Repeat: Horizontal 69.0cm Vertical 69.0cm

Martindale: 20000

Care: Professional Clean Only

Description: Originally produced in 1885 by Thomas Wardle, William Morris' master dyer and textile painter, includes woodland animals amid scrolling foliage. The original textile was used to decorate a book cover.