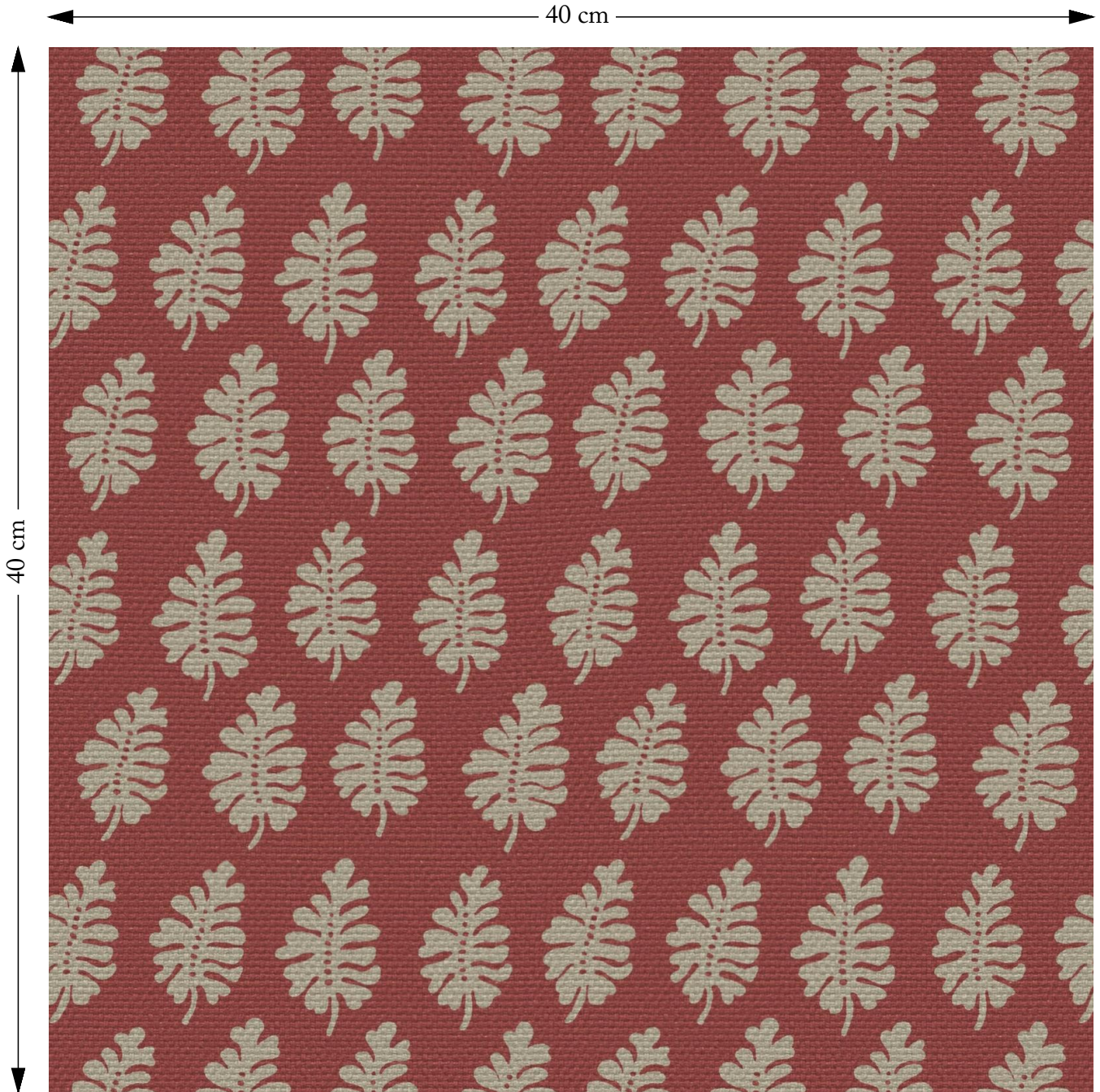


# SOFAS & STUFF



The amount of fabric shown above is indicated by the dimension.

## Cloth 21 Oak Leaf Ginger Snap

Composition: 88% Cotton 12% Polyester

Repeat: Horizontal 19.7cm Vertical 25.4cm

Martindale: 50000

Care: Professional Clean Only

Description: One of 7 prints designs and a complementary printed stripe, Cloth 21 is inspired by ancient Sussex woodlands and coastal walks. Re-visiting 19th century wood block printing techniques, the fabrics have a textural richness that complements the lovely stylistic patterns. Designed in-house, and exclusive to us.