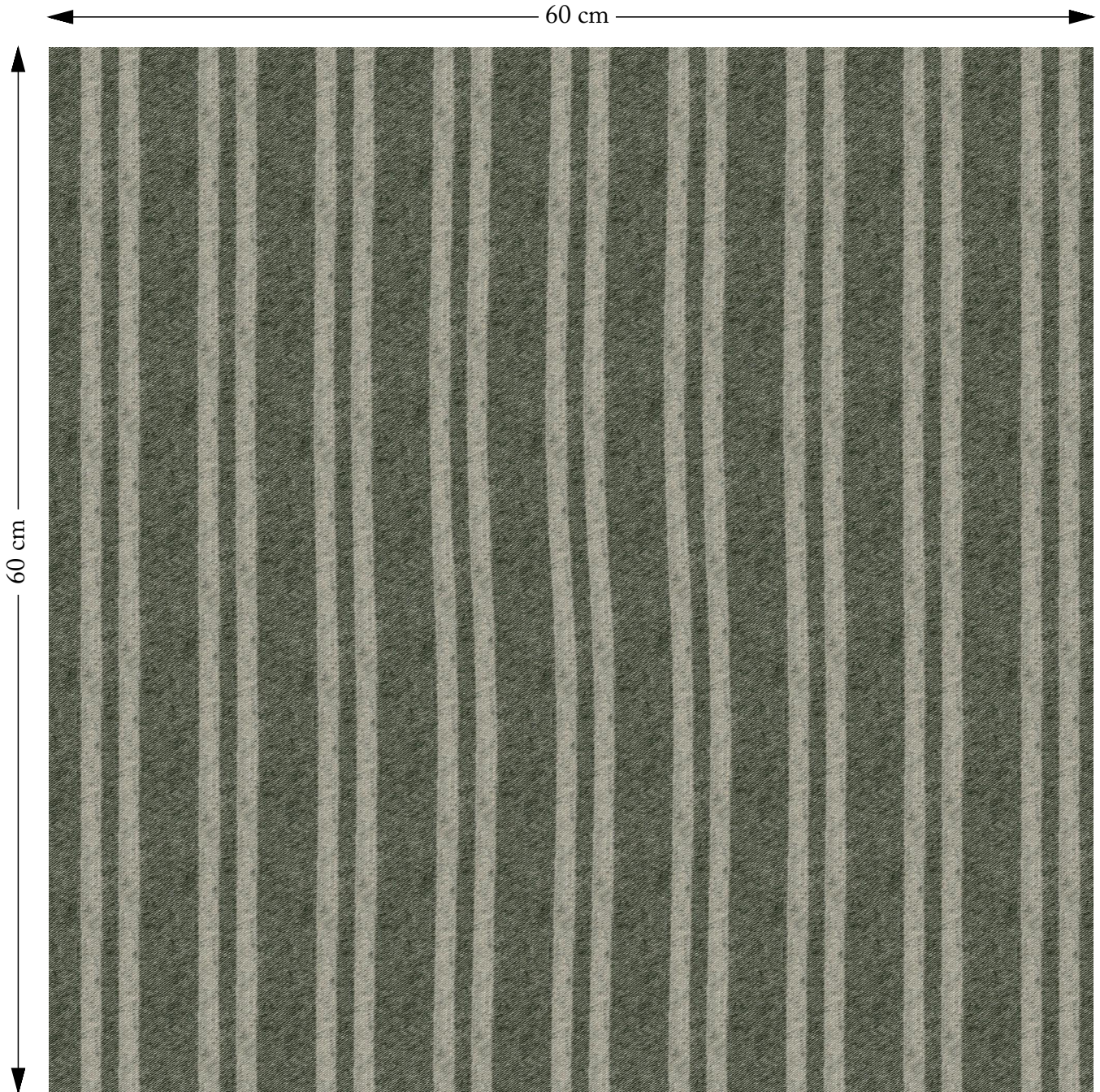


SOFAS & STUFF



The amount of fabric shown above is indicated by the dimension.

Cloth 22 Barcode Stripe Courgette

Composition: 50% Cotton 50% Wool

Repeat: Horizontal 0.0cm Vertical 6.8cm

Martindale: 30000

Care: Professional Clean Only

Description: Part of our range of fabrics that are designed by, or exclusive to us, Cloth 22 offers a range of statement printed stripes in three co-ordinating designs, creating a highly versatile range of fabrics suitable for traditional settings as well as more contemporary schemes. Each feature two tones, one light, one darker, and are available in five neutral colourways. Barcode's design sees pairs of light stripes bounded by a wider line in the darker tone.