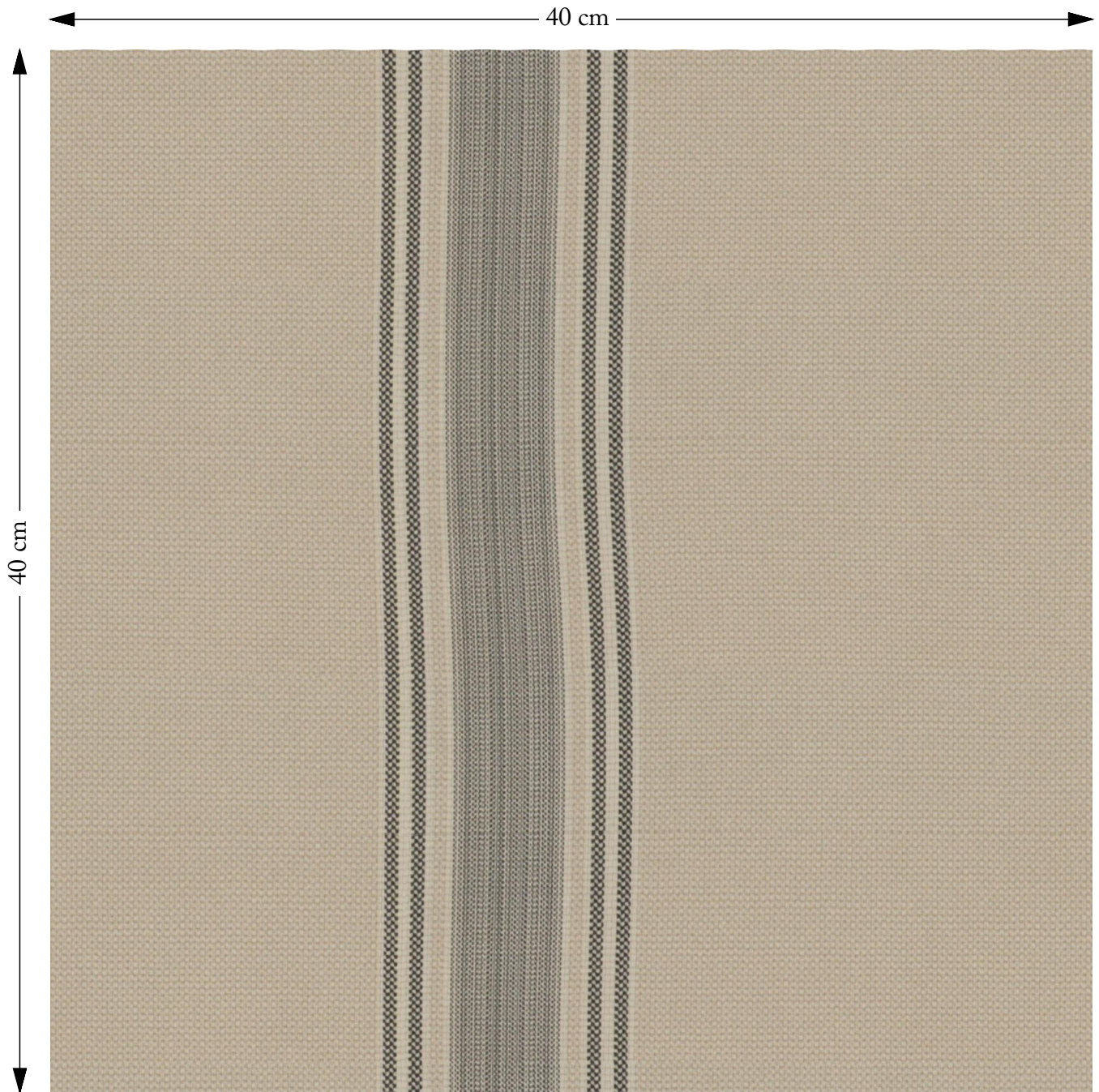


# SOFAS & STUFF



The amount of fabric shown above is indicated by the dimension.

## Cloth 22 Racing Stripe Cheltenham Charcoal

Composition: 88% Cotton 12% Polyester

Repeat: Horizontal 34.5cm Vertical 0.0cm

Martindale: 50000

Care: Professional Clean Only

Description: Part of range of fabrics that are designed by, or exclusive to us, Cloth 22 Racing Stripes is a timeless and unfussy family of four printed stripes designed to work in combination, or to complement other patterns and florals. Cheltenham features a widely spaced stripe pattern with a broad stripe bounded by a pair of narrow stripes at either side.