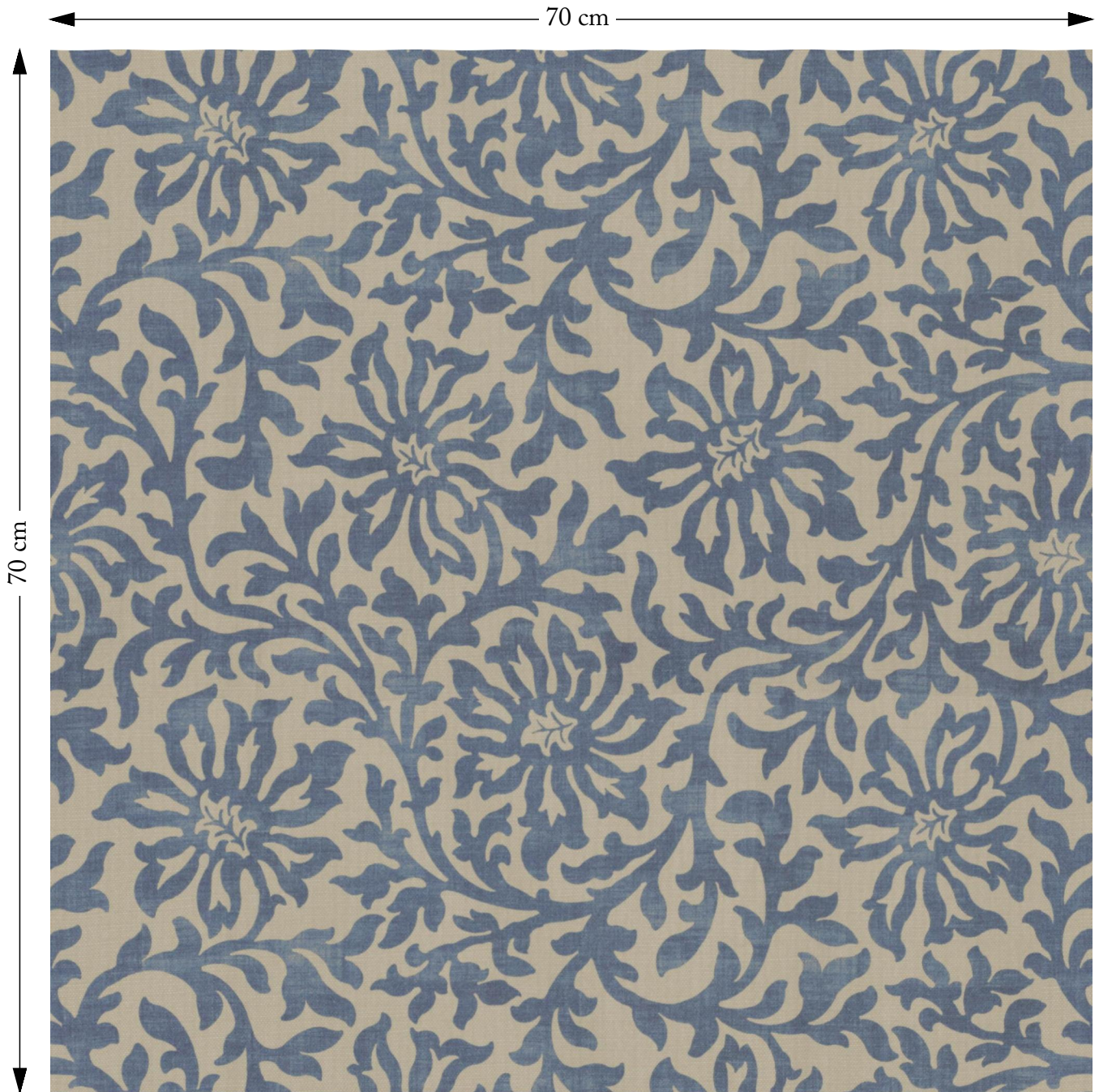


# SOFAS & STUFF



The amount of fabric shown above is indicated by the dimension.

## V&A Brompton Floral Scroll Morning Blue

Composition: 65% Cotton 35% Linen

Repeat: Horizontal 69.0cm Vertical 47.0cm

Martindale: 35000

Care: Professional Clean Only

Description: Based on a printed cotton from 1860-85. The arrangement of rambling flowers and foliage has a sense of movement and spontaneity. The stylised flower heads of this scrolling design are printed in monochrome in 10 striking colours on a neutral ground.