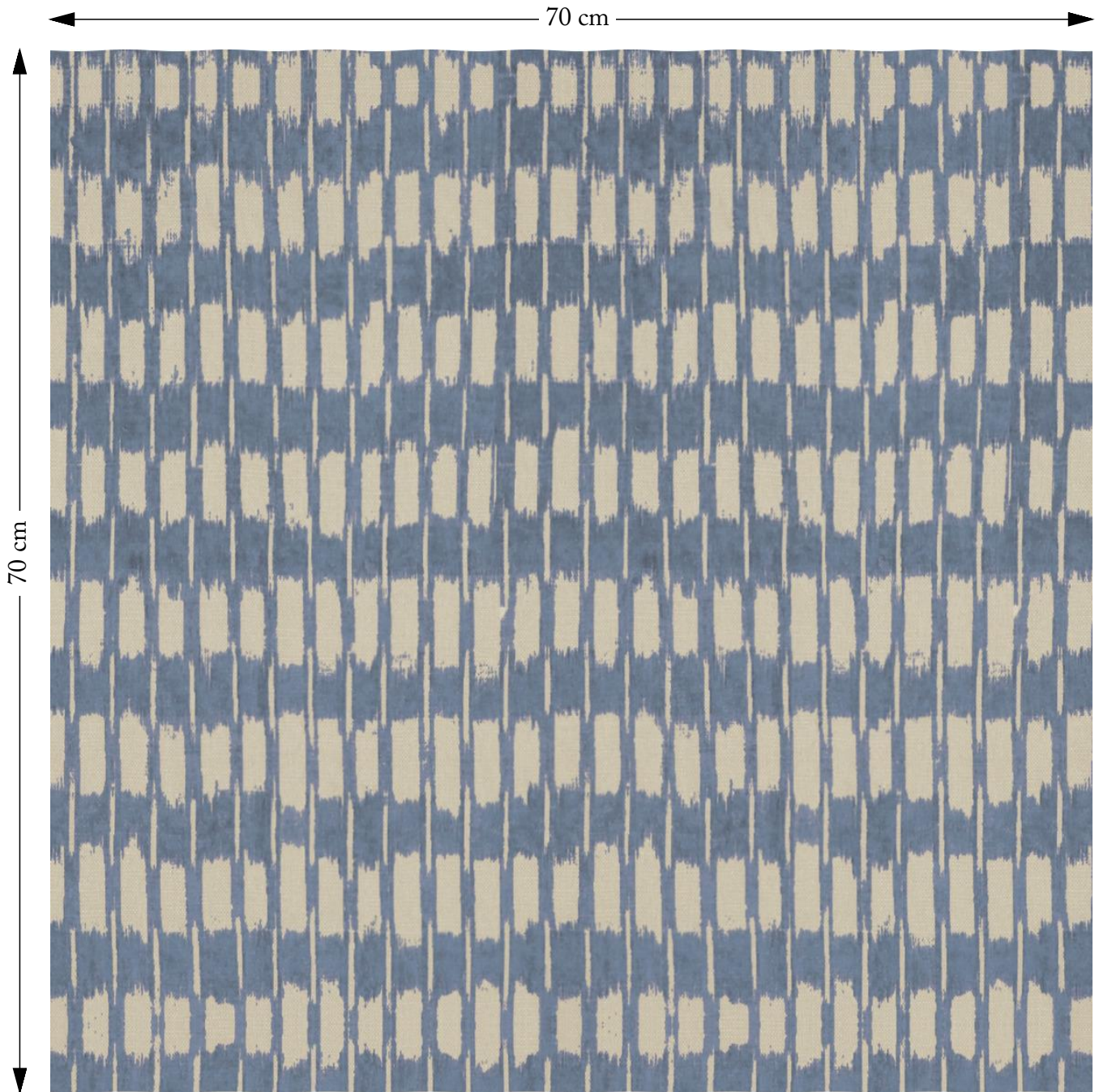


SOFAS & STUFF



The amount of fabric shown above is indicated by the dimension.

V&A Brompton Ikat Morning Blue

Composition: 65% Cotton 35% Linen

Repeat: Horizontal 69.0cm Vertical 129.0cm

Martindale: 35000

Care: Professional Clean Only

Description: A broad stripe broken with horizontal bands, creating almost a check design. This elegant, understated fabric resembles the time-honoured technique of ikat and is based on a furnishing fabric possible made in France about 1790-1850. Presented in a harmonious colour palette of 10 contemporary hues.