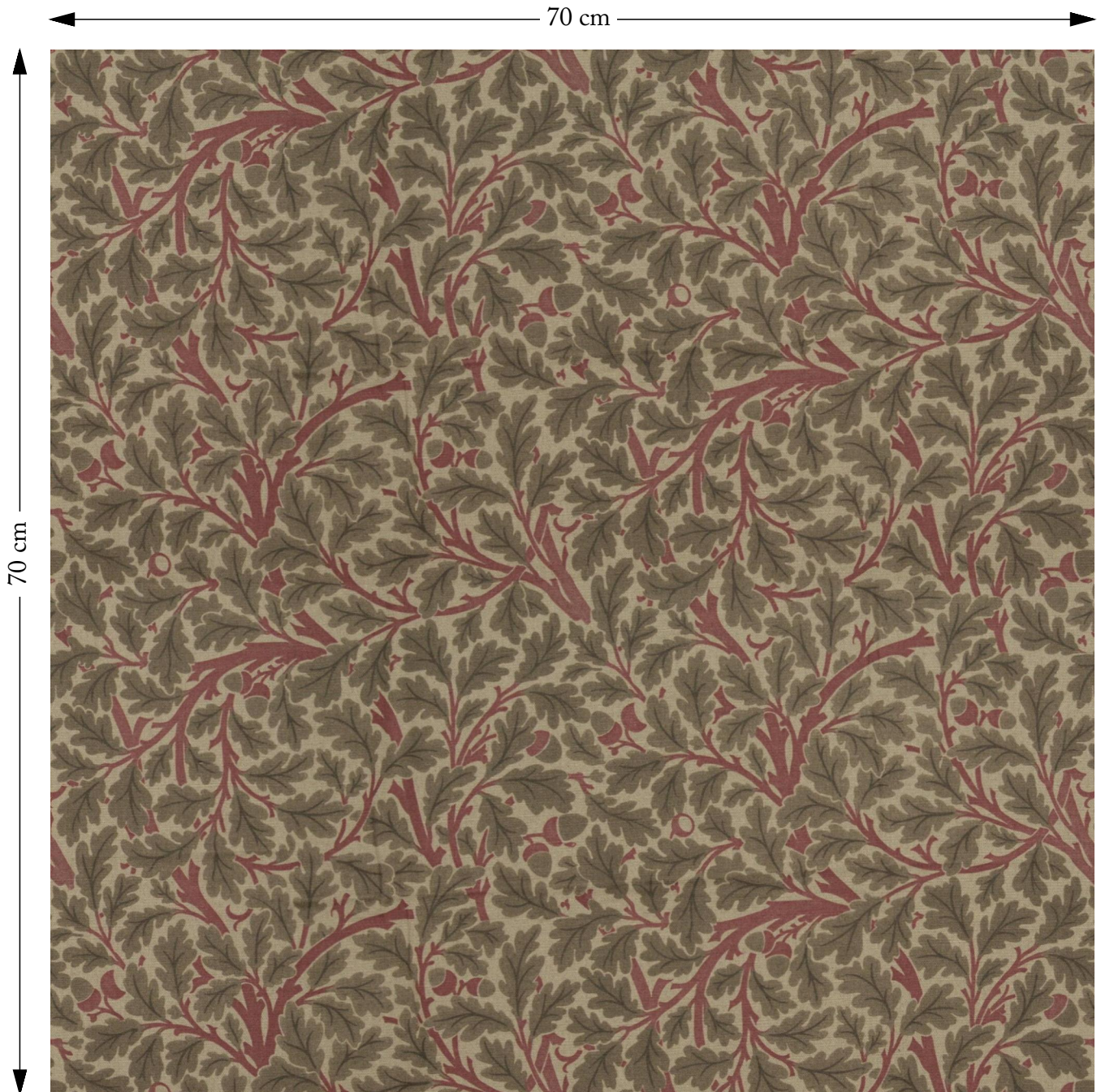


SOFAS & STUFF



The amount of fabric shown above is indicated by the dimension.

V&A Drawn from Nature Oak Tree Red (oklred)

Composition: 100% Linen

Repeat: Horizontal 69.0cm Vertical 35.5cm

Martindale: 20000

Care: Professional Clean Only

Description: A captivating design of oak leaves and acorns, adapted by J.H Dearle from William Morris' designs inspired by his time exploring Epping Forest and Essex countryside.